

DID YOU KNOW?

about our...



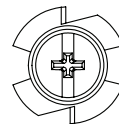
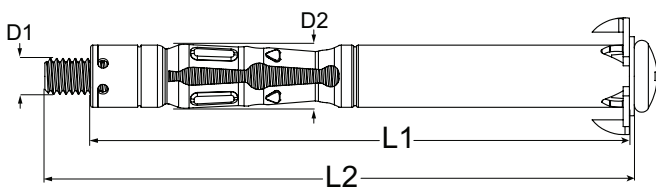
**NEW
PRODUCT**

Standard Hollow Wall Anchor

STANDARD HOLLOW WALL ANCHOR ZINC PLATED (ROHS COMPLIANT) / HEC CARBON STEEL



Part	QFind	Size	Dia Ø		Total Length		Wall Thickness (mm)	Clearance hole diameter D ₂ (mm)	Pack Qty
			D ₁ (mm)	L ₁ (mm)	L ₂ (mm)				
MWHDZPCM040030	MWH100	M4	4	23.5	30	0 - 4	8	100	
MWHDZPCM040641	MWH101	M4	4	35.0	41	4 - 9	8	100	
MWHDZPCM041147	MWH102	M4	4	40.0	47	9 - 15	8	100	
MWHDZPCM041753	MWH103	M4	4	46.0	53	15 - 21	8	100	
MWHDZPCM043167	MWH104	M4	4	60.0	67	30 - 38	8	100	
MWHDZPCM050546	MWH105	M5	5	37.0	46	5 - 13	10	50	
MWHDZPCM050759	MWH106	M5	5	50.0	59	5 - 17	10	50	
MWHDZPCM060546	MWH107	M6	6	37.0	46	4 - 13	11	50	
MWHDZPCM060759	MWH108	M6	6	50.0	59	5 - 18	11	50	



Features

- Combination Drive: Philips/Slot
- Cavity Fixing: Plasterboard and other hollow wall materials
- Barbs: Anti-rotational spikes built onto the flange to prevent the anchor from spinning



Anti-rotation barbs

All metal (light duty) cavity fixing for plasterboard and other hollow wall materials up to 38mm in thickness.

CONXTRUCT

Bolt Tension | Anti-Vibration | Product Reliability | Traceability

hobson.com.au **QUALITY FASTENERS SINCE 1935**



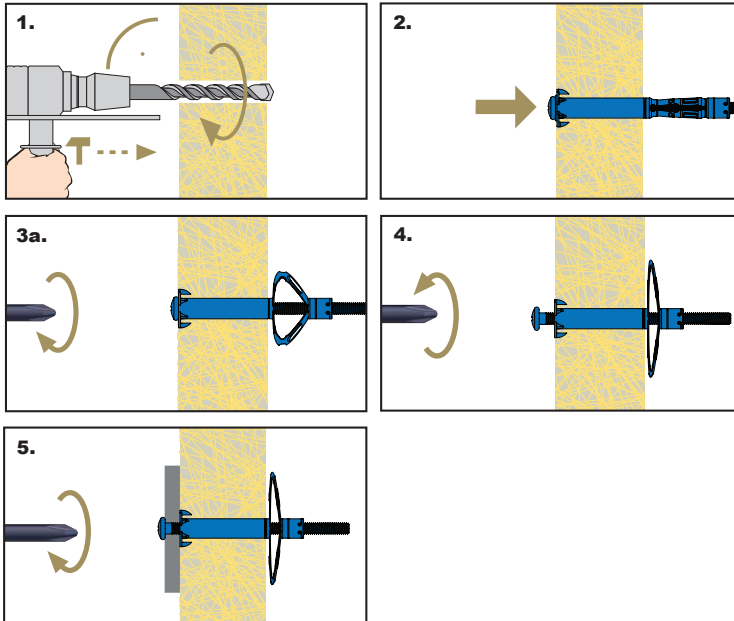
DID YOU KNOW?



Standard Hollow Wall Anchor

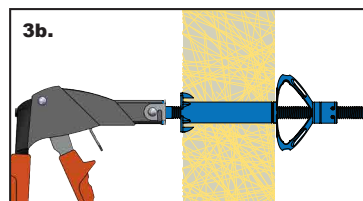
**NEW
PRODUCT**

Installation



Recommended Setting Tool

Hollow Wall Anchor Tool	
Part	Description
MATWHR	M4-M6 Ratchet Style



Installation Guides

1. Drill a hole to recommended clearance through the base material.
2. Insert the anchor and tap the head until the barbs are embedded in the base material and the head is flush with the surface.
- 3a. Using a screwdriver screw in clock wise direction. The effort required to turn the screw will increase as the legs of the anchor collapse behind the wall. Tighten until firm resistance is felt.
- 3b. For faster setting- back the screw head out 2-3 mm. Fit the tool over the head of the screw then squeeze the tool to pull up the legs of the anchor in the wall cavity.
4. Remove the screw.
5. Place the screw back into the anchor through a fixture with a clearance, tighten the screw until the fixture is fixed.